

# CondexaPRO

Light commercial wall hung boiler

IDEAL FOR LARGE  
DOMESTIC PROPERTIES  
AND LIGHT COMMERCIAL

SATISFY DHW, LOW  
TEMPERATURE AND  
HIGH TEMPERATURE  
HEATING REQUIREMENTS

FLEXIBLE INSTALLATION



# CondexaPRO

## Light commercial wall hung boiler

SPECIFICATIONS	CondexaPRO 50M	CondexaPRO 100M	CondexaPRO 100S
Product order code	20019678	20019311	20019677
Heat output at 80/60°C	44.2 kW	88.3 kW	88.3 kW
Heat output at 50/30°C	48.5 kW	96.8 kW	96.8 kW
Flow rate at 20°C	33.0 l/min	66.7 l/min	66.7 l/min
Waterside pressure drop at 20°C	700 mbar	700 mbar	700 mbar
Maximum water pressure	6.0 bar	6.0 bar	6.0 bar
Minimum water pressure	0.5 bar	0.5 bar	0.5 bar
Maximum water temperature (flow)	80°C	80°C	80°C
Width	600mm	600mm	600mm
Depth	380mm	380mm	380mm
Height	1000mm	1000mm	1000mm
Dry weight	60kg	90kg	90kg

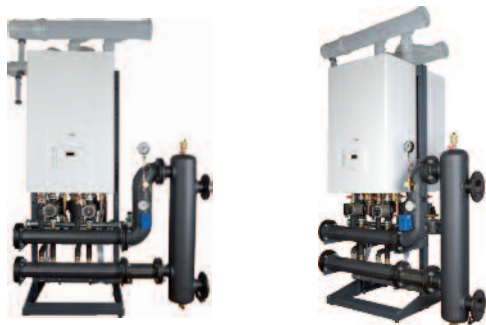
CONDEXAPRO RANGE ACHIEVED AN EFFICIENCY ★★★★★  
ACCORDING TO EUROPEAN DIRECTIVE EEC 92/42.

### INTELLIGENT DESIGN FOR FLEXIBLE INSTALLATION

To ensure maximum use of space and flexibility of installation and servicing Vokèra has developed a clever frame for the cascade and stand-alone installation of the CondexaPRO range.

According to the space requirements of the customer, the same frame allows three different possibilities of installation; wall-hung, linear free-standing and back-to-back free-standing installation.

Suitable for both linear and back-to-back configurations the frame provides a trouble-free installation solution without the need of a wall.



'A' band.

Possibility to combine CondexaPRO boilers in cascade systems up to 400 kW, making them suitable for a wide variety of installations, from large domestic properties, office buildings and sports centres to schools and hotels.

Flexible and space saving cascade installations allow the system to be tailored to meet the space requirements of the customer, who can choose among wall hung, linear free-standing and back-to-back free-standing configurations.

The CondexaPRO units are designed to provide water to 3 different circuits at different temperatures. The suggested usages are DHW, high temperature (radiator heating) and low temperature (under floor heating and swimming pools).

The CondexaPRO range is designed so that to minimise disruption during servicing. All components can be easily serviced and maintained from the front and each boiler of the cascade can also be individually serviced and maintained, while the other boilers of the cascade are still able to operate.

Excellent performance combined with low running costs, thanks to Vokèra condensing technology with pre-mix combustion.

Built-in temperature control and external probe as standard to maximise energy efficiency

Cylindrical condensing heat-exchanger has an excellent corrosion resistance and achieved ★★★★★ efficiency.\*

The latest generation electronic control, ensures a quick connection to any type of heating and hot water storage systems as it simultaneously controls three different circuits, each operating at different temperatures.

Siting and installation flexibility of the boiler make it deal for both new build and refurbishment applications.

High modulation range: The Master models can modulate down to only 16 kW, maximising efficiency and comfort levels.

Anti-legionnaires' disease function (only available with room control kit).

Weekly programmer (only available with room control kit).

Minimum polluting emissions. The CondexaPRO has achieved Class 5 of the UNI EN 677 standard - the best European category in ecological terms.



Vokèra is a licensed member of the Benchmark scheme which aims to improve the standards of installation and commissioning of domestic hot water systems in the UK.

Registered Address: Vokèra Ltd Borderlake House, Unit 7 Riverside Industrial Estate, London Colney, AL2 1HG

Email: enquiries@vokera.co.uk Web: www.vokera.co.uk

Tel: 0844 391 0999

Fax: 0844 391 0998

Vokèra Ireland West Court, Callan, Co Kilkenny

Tel: 056 7755057

Fax: 056 7755060

Vokèra Limited reserve the right to change specification without prior notice. Consumers statutory rights are not affected. A Riello Group Company.  
Company Reg No.: 1047779

Issue 01/11 cm94