



BeSMART

A Smarter Thermostat



Multi Zone Wi-Fi
Thermostat



Be THE FIRST

...well OK, one of the first
to benefit from **BeSMART**.

BeSMART is one of the first internet enabled heating control systems designed so that every home can enjoy the benefits of BeSMART control. Specifically engineered to complement the Vokera boiler range, whilst maintaining compatibility with the majority of residential boilers, it is the ideal replacement for older thermostats.



Be BETTER

...with **BeSMART** customers can cut bills by taking total control of their home heating...

BeSMART is simple to use. It works automatically, but you can control it wherever you are, any time, from the BeSMART mobile App or computer. With the BeSMART App, programming a thermostat has never been so simple and intuitive. BeSMART can react intelligently to ambient weather and adjust accordingly, meaning that on warm days it will save even more. It's quick to install and great value. Best of all, it's designed by Vokèra to work perfectly with an existing Vokèra heating system. BeSMART is a clever way to cut costs by matching heating to different lifestyles. Which means only paying for heating when people are at home to feel the benefit of it.



Be ANYWHERE

...with **BeSMART**. Users can adapt their heating to suit their schedules and lifestyles.

So, whether they're off on holiday, out shopping or just working late, they can BeSMART and manage their home's heating remotely. BeSMART gives them complete control of their home environment via the handy App on a smartphone or tablet.





Be IN CONTROL

...with **BeSMART** our service centre will know straight away if something goes wrong...

...so it can get fixed with the least disruption*.

Be UNIVERSAL

...developed to suit any system.

Indeed anyone can enjoy the benefits of BeSMART, the 'smart' thermostat is compatible with the majority of heating systems and is the ideal replacement for older room thermostats.

**Feature available from spring 2016*

B@SMART INSTALLATION

...quick and easy.
If you are replacing an old thermostat...

...BeSMART requires no additional wiring.



Home heating control wherever you are via a smartphone, tablet or desktop.



Compatible with the majority of boiler brands, not just Vokèra.



Manage up to 8 different heating zones from wherever you are in the world.



Weather compensation adjusts boiler output to reflect ambient climate.



Programme up to 3 comfort levels to suit mood or pocket.



BeSMART UNIVERSALLY

...BeSMART offers a wide range of accessories to suit different applications...

...and also offers greater expansion of the control and management of your heating system. These pages illustrate two examples of the BeSMART control, applicable with all major brands of boilers on the market. Under each scheme are the codes of the components necessary to achieve that type of installation.

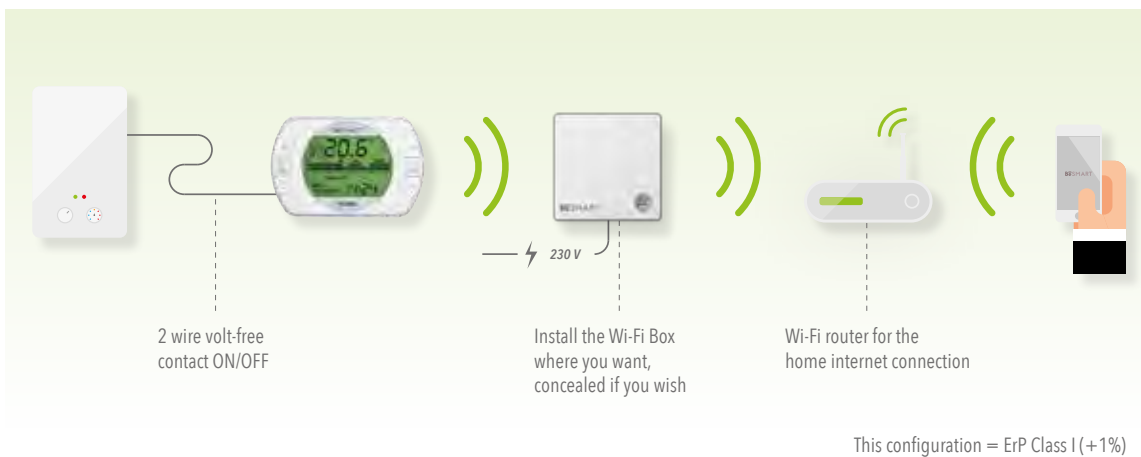



Single Zone

Programmable Wi-Fi Thermostat for ON/OFF Control

The typical BeSMART 'universal' solution. This BeSMART example is an application that can be used on all brands of boilers, which have a simple ON/OFF control. Use the two existing wires to connect directly to the ON/OFF terminals of the BeSMART thermostat. Connect the BeSMART Wi-Fi box to a power outlet, download the BeSMART App to a tablet or smartphone (from the App Store or Google Play), then follow the instructions to program the system. It couldn't be simpler.

NB: When replacing a thermostat that has more than two wires, e.g. also has a Neutral supply; the 'switch' wires must be identified. Connect only the 'switch' wires to the BeSMART ON/OFF terminals; do not connect a Neutral supply. The BeSMART thermostat is powered by 2 x AA batteries; it therefore does not require a fixed 230V mains power supply.



SINGLE CONFIGURATION		
CODE	QUANTITY	DESCRIPTION
20111860	1	 BeSMART Kit (inc. BeSMART Thermostat and Wi-Fi Box)

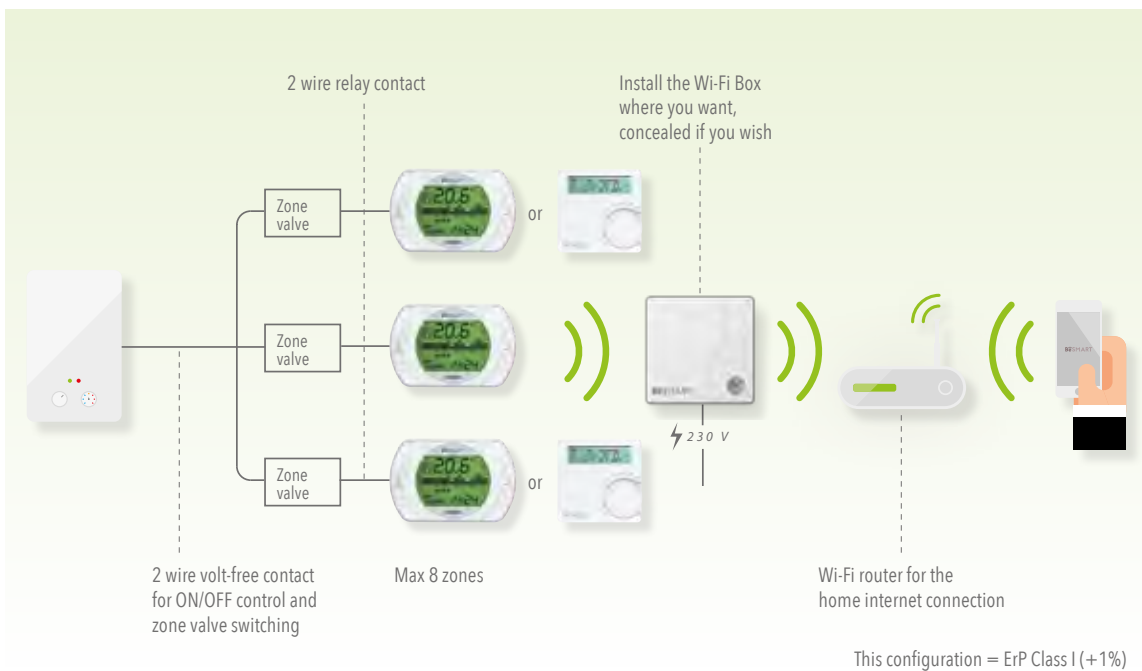


Multi-Zone

Programmable Wi-Fi Thermostat for Zone Valve Control and Boiler ON/OFF Control

Even in existing multi-zone systems, BeSMART is simple and universal. BeSMART has a control relay for a zone valve (Max 0.25A at 230V, or Max 2A at 24V). Just replace each of the old thermostats with a BeSMART and connect the cables to the BeSMART output relay. As an alternative option, an RF Programmable Room Thermostat can be used for each additional zone.

NB: When replacing a thermostat that has more than two wires, e.g. also has a Neutral supply; the 'switch' wires must be identified. Connect only the 'switch' wires to the BeSMART ON/OFF terminals; do not connect a Neutral supply. The BeSMART thermostat is powered by 2 x AA batteries; it therefore does not require a fixed 230V mains power supply.



EXAMPLE CONFIGURATION FOR 3 ZONES*:

CODE	QUANTITY	DESCRIPTION
20111860	1	 BeSMART Kit (inc. BeSMART Thermostat and Wi-Fi Box)
20111875	2	 BeSMART Thermostat
20101743	2	 RF Programmable Room Thermostat (alternative option to 20111875 above)

* In the case of 8-zones (for example), you would require 7 x code 20111875 (BeSMART Thermostat), in addition to 1 x code 20111860 (BeSMART Kit).

BeSMART SERVICE

BeSMART is much more than a wireless thermostat.

Developed exclusively for the end user; Vokèra provides the possibility of an online connection to its Service Centre*, upon verification of system compatibility. These pages illustrate two BeSMART examples and the relevant product codes, necessary to achieve that type of installation.

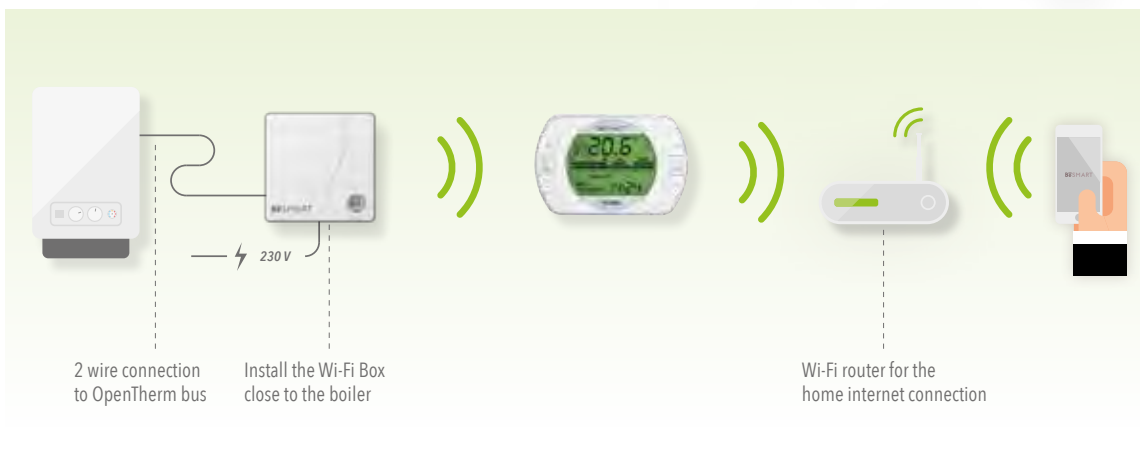
**These additional services offered by Vokèra, will become available during 2016. When BeSMART is installed in this configuration, the service we can provide will become greatly enhanced.*




Single Zone

Programmable Wi-Fi Thermostat with Boiler OpenTherm Connection

Exclusive to Vokèra, an advanced solution and enhanced service that is enabled via the boiler's OpenTherm connection. Current Vokèra boilers are OpenTherm compatible, for older Vokèra boilers check page 11 to see which models are compatible with OpenTherm. With BeSMART and OpenTherm, there is a greater degree of connectivity, where you can view the boiler's operating condition, alerts, parameters, and more.



This configuration = ErP Class VI (+4%)*

SINGLE CONFIGURATION		
CODE	QUANTITY	DESCRIPTION
20111860	1	 BeSMART Kit (inc. BeSMART Thermostat and Wi-Fi Box)

**Requires weather compensation via physical sensor or Internet look up via BeSMART App*

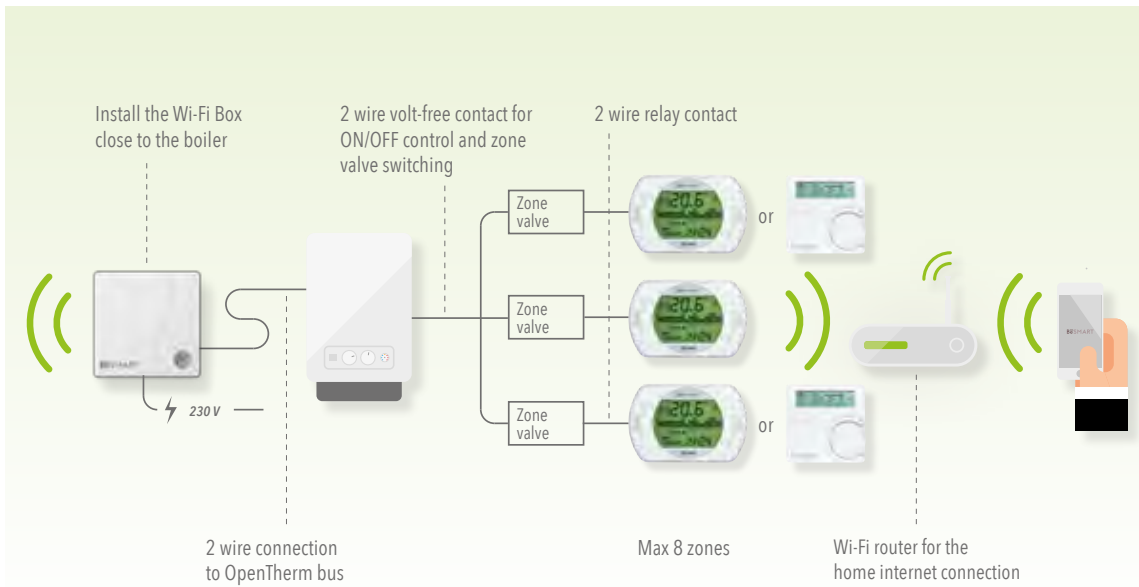


Multi-Zone

Programmable Wi-Fi Thermostat For Zone Valve Control and Boiler OpenTherm Connection

Even on multi-zone systems, with a Vokèra boiler you can enable advanced services. Current Vokèra boilers are OpenTherm compatible, for older Vokèra boilers check besmart-home.com to see which models are compatible with OpenTherm. With BeSMART and OpenTherm, there is a greater degree of connectivity, where you can view the boiler's operating condition, alerts, parameters, and more.

NB: When replacing a thermostat that has more than two wires, e.g. also has a Neutral supply; the 'switch' wires must be identified. Connect only the 'switch' wires to the BeSMART ON/OFF terminals; do not connect a Neutral supply. The BeSMART thermostat is powered by 2 x AA batteries; it therefore does not require a fixed 230V.



This configuration = ErP Class VIII (+5%)

EXAMPLE CONFIGURATION FOR 3 ZONES*:






CODE	QUANTITY	DESCRIPTION
20111860	1	 BeSMART Kit (inc. BeSMART Thermostat and Wi-Fi Box)
20111875	2	 BeSMART Thermostat
20101743	2	 RF Programmable Room Thermostat (alternative option to 20111875 above)

* In the case of 8-zones (for example), you would require 7 x code 20111875 (BeSMART Thermostat), in addition to 1 x code 20111860 (BeSMART Kit).

BeSMART ACCESSORIES

The **BeSMART** control and range accessories, will be able to satisfy most applications or specific installation requirement.

Listed below are all the codes that make up the BeSMART system, from standard kit, to accessories for specific applications. Once again you'll be surprised at the inherent simplicity of the BeSMART system.

BESMART ACCESSORIES:	
CODE	DESCRIPTION
20111860	 <p>STANDARD BESMART WI-FI KIT Kit includes the BeSMART Thermostat and Wi-Fi Box and power supply (Also includes: batteries, boiler OT wiring kit, wall fixings, adhesive magnetic fixing strip and instructions).</p>
20111875	 <p>BESMART THERMOSTAT For use with multi-zone applications - can be coupled to an existing Wi-Fi Box to enable multi-zone control (Also includes: batteries and wall fixings).</p>
20101743	 <p>RF PROGRAMMABLE ROOM THERMOSTAT For use with multi-zone applications - can be coupled to an existing Wi-Fi Box to enable multi-zone control (Also includes: batteries and wall fixings).</p>
20111890	 <p>WI-FI BOX Enables expansion or upgrade of existing BeSMART Thermostat thereby enabling enhanced functionality via the BeSMART App (Also includes: wall fixings, magnetic fixing strip, Wi-Fi Box power supply and instructions).</p>
20112079	 <p>BOILER RF RECEIVER Pre-wired and can be used to configure the BeSMART Thermostat into a standard RF control; and can also be used in those occasions where the boiler location has a poor or absent Wi-Fi signal (Also includes: magnetic fixing strip).</p>
20112080	 <p>RF OUTSIDE SENSOR KIT (PHOTOVOLTAIC) RF temperature sensor (photovoltaic) for weather compensation control. Only for compatible boilers. (Also includes: boiler receiver with pre-wired connector and wall fixings).</p>
20112083	 <p>WI-FI ROUTER FOR SIM CARD SIM card router, plugs directly in to a 230V power socket to create a Wi-Fi network and connect BeSMART to the internet. Ideal for second homes (data required SIM card, not included).</p>
20112112	 <p>WI-FI EXTENDER Extends and improves the Wi-Fi signal in areas of your home where the Wi-Fi signal strength is poor or inadequate.</p>

For more information and technical details please contact your BeSMART specialist or visit: besmart-home.com

BeSMART COMPATIBLE BOILERS

PRODUCT/RANGE	PRODUCT TYPE		CONTROL CAPABILITY		
	TYPE	EFFICIENCY	ON/OFF	OT	DHW
CURRENT PRODUCTS					
COMPACT A	COMBI	HE	✓	✓	✓
LINEA ONE	COMBI	HE	✓	✓	✓
MYNUTE I	SYSTEM	HE	✓	✓	✗
UNICA I	COMBI	HE	✓	✓	✓
VIBE	SYSTEM	HE	✓	✓	✗
VISION C	COMBI	HE	✓	✓	✓
VISION S	SYSTEM	HE	✓	✓	✗
LEGACY PRODUCTS					
COMPACT	COMBI	SE	✓	✗	✗
COMPACT HE	COMBI	HE	✓	✗	✗
DMCF	COMBI	SE	RELAY	✗	✗
ECLIPSE ESC	COMBI	HE	✓	✗	✗
ECLIPSE ESS	SYSTEM	HE	✓	✗	✗
EXCEL	COMBI	SE	✓	✗	✗
FLOWMATIC	COMBI	SE	RELAY	✗	✗
HYDRA	COMBI	HE	✓	✗	✗
LINEA	COMBI	SE	✓	✗	✗
LINEA HE	COMBI	HE	✓	✓	✓
MAXIN	COMBI	SE	RELAY	✗	✗
MCF	COMBI	SE	RELAY	✗	✗
MYNUTE A	SYSTEM	HE	✓	✓	✗
MYNUTE e	SYSTEM	SE	✓	✗	✗
MYNUTE HE	SYSTEM	HE	✓	✓	✗
MYNUTE RS/RSE	SYSTEM	SE	RELAY	✗	✗
MYNUTE SE	SYSTEM	SE	RELAY	✗	✗
OPTION	COMBI	SE	✓	✗	✗
PINNACLE	SYSTEM	HE	✓	✗	✗
RSTURBO	COMBI	SE	RELAY	✗	✗
SYNTESI	COMBI	HE	✓	✗	✗
UNICA HE	COMBI	HE	✓	✓	✓

A full list of compatible boilers is available at www.besmart-home.com
For training on BeSMART please call 01727 744002 or email training@vokera.co.uk



vokera.co.uk/besmart

Supporting our professional partners

VokèraAffinity

FREE Gas Safe notification, warranty activation, automated points claims and fantastic rewards! Register today at www.vokeraaffinity.co.uk

VokèraApp



Download the VokèraApp to access a host of useful tools and resources to help you do even better business.



Registered address:

Vokèra Limited
Borderlake House
Unit 7 Riverside Industrial Estate
London Colney
Herts AL2 1HG

enquiries@vokera.co.uk
www.vokera.co.uk

Sales, General Enquiries:

T 0844 391 0999
F 0844 391 0998

Vokèra Ireland
Westcourt Business Park
Callan
Kilkenny
R95 PW40

www.vokera.ie

T 056 775 5055
F 056 775 5060



© 2016 Vokèra Limited.
We reserve the right to change specification without prior notice.
Consumers statutory rights are not affected.
All rights reserved. E&OE.

A Riello Group Company. Company Reg No: 1047779

Issue 02/16/NP