

WIRELESS OPENTHERM PROTOCOL \ OUTSIDE WEATHER COMPENSATING CONTROL \ PROGRAMMABLE ROOM THERMOSTAT



Intelligent controls

The installation and correct use of a Vokèra intelligent control can save up to 10% of a home's energy usage whilst providing a more comfortable and stable room temperature. Compatible with Vokèra's high efficiency ranges* these controls aid maximum boiler efficiency.

OpenTherm protocol RF Programmable room thermostat

Code: 611

The Vokèra OpenTherm control uses OpenTherm protocol technology to modulate the Vokèra boiler* outlet temperature in order to maintain a certain room temperature as set by the homeowner maximising boiler efficiency and homeowner comfort.



BOILER COMPATIBILITY

Linea HE (all outputs)*

Unica HE (all outputs)

Mynute HE (all outputs)**

Please note:

*Requires wiring kit Code: 1221179

**Contact Vokèra Technical Helpline for advice

DID YOU KNOW...

...that by adding one of our energy saving controls to a Vokèra high efficiency boiler, its SAP efficiency increases by an additional 2%!

Saves up to 10% of a home's energy consumption reducing fuel usage as well as reducing CO₂ emissions.

Wireless (RF) transmitter enables simple installation as the transmitter can be wall mounted or free standing.

'Holiday Function' enables the end user to set the control for the duration of the holiday and the temperature at which the boiler should operate during the holiday period, providing suitable heating and hot water temperature upon the homeowners return.

'Optimisation Function' when enabled, will start the boiler prior to the timed 'ON' period so that the room will reach desired comfort level for when the 'ON' period begins.

Simple up and down buttons ensures end-users can easily operate and adjust temporary changes to the set-point.

Two pre defined and one user defined programme allow maximum flexibility over heating and hot water timings.

'Info Function' enables end user to view the current room temperature, target room temperature, required hot water temperature, current operating mode and switching times of the current programme.

Automatic mode switching for Summer/Winter (BST) ensures appliance delivers optimum performance and efficiency throughout each season.

Wireless (OT) receiver can be wall mounted or placed in the boiler cover, allowing for a cleanly styled installation.

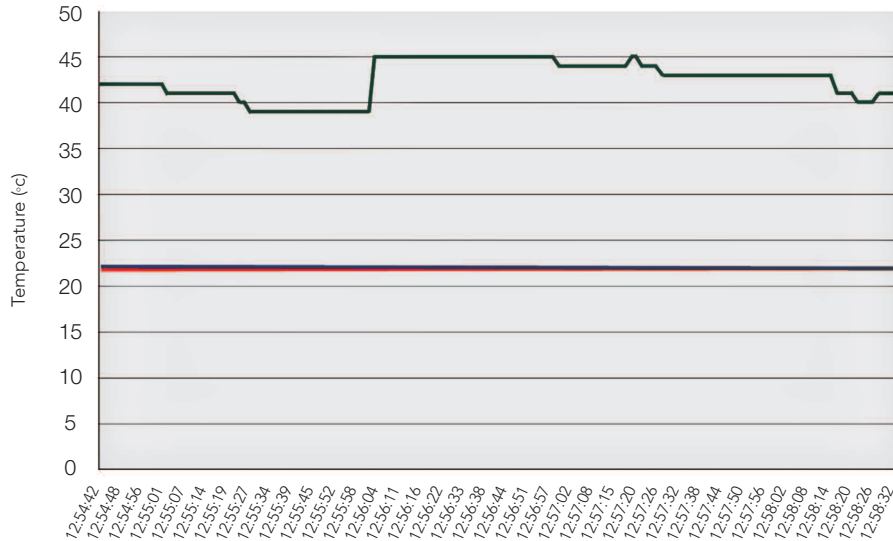
Wireless (RF) transmitter control panel is located behind a hinged cover to allow the control to blend easily into any setting.

Please note that the Vokèra OpenTherm protocol only works with the above Vokèra boiler models and is not compatible with other manufacturers boilers.



How does the Vokèra OpenTherm protocol work?

The OpenTherm protocol control takes over the control of the boiler's outlet flow temperature to ensure a stable room temperature, i.e. the flow temperature automatically reduces as the room temperature approaches the set-point. This substantially increases the appliance's efficiency and also avoids temperature 'over-shoot' and 'under-shoot' thereby increasing comfort conditions for the end user.



This chart represents a snapshot of how the OpenTherm protocol control manages the appliance set point to aid maximum boiler efficiency and reach an optimum level of comfort for the end user.

— Room temperature
 — Flow temperature
 — Room set point

Outside weather compensation control

Code: 2359259



(Directly fits to Linea HE, Unica HE, Mynute HE and can be connected to Compact HE, Linea 7 and Compact SE using RC05 Programmer)

Most of Vokèra's current boiler range comes with pre-configured weather compensating technology, allowing you to install the highest efficiency solution simply by fitting this external sensor.

The outside weather compensation control regulates the boiler in-line with outside weather conditions increasing end user comfort.

The control fits to an external north or north westerly facing wall (recommended) with a simple bell wire connection.

Pre-configured into all Vokèra boilers ready to accept this control.

Extremely simple to install.

Can be retro fitted.

RC05 Programmable room thermostat and boiler control

Code: 405



*(When using the RC05 with Compact HE and Compact SE you will also require the wired remote control interface. Code: 409)

For use with Linea-7, Compact SE* & Compact HE* it allows these boilers to be sited anywhere in the home, e.g. in a loft space. The RC05 can be fitted in an accessible location enabling direct control over the boiler.

The RC05 can also be used with the outside weather compensation control (Code: 2359259).

Facilitates remote reset.

Alarm codes and services icons displayed.

DHW and heating temperature regulation.

3-modes of operation.

Comprehensive remote diagnostics.



Registered address:

Vokera Ltd
Borderlake House
Unit 7 Riverside Industrial Estate
London Colney
Herts AL2 1HG

enquiries@vokera.co.uk

www.vokera.co.uk
www.vokera.ie

Sales, General Enquiries:

T 0844 391 0999

F 0844 391 0998

Vokera Ireland
West Court, Callan
Co Kilkenny
T 056 7755057
F 056 7755060

Vokera Limited reserve the right to change
specification without prior notice.
Consumers statutory rights are not affected.

A Riello Group Company.
Company Reg No: 1047779