

Vokera

heating for life

WIRELESS OPENTHERM PROTOCOL \ OUTSIDE WEATHER COMPENSATING CONTROL \ COMBINED ROOM THERMOSTAT AND CLOCK



PROGRAMMABLE ROOM THERMOSTAT \ MECHANICAL CLOCKS \ DIGITAL PROGRAMMERS



VOKERA ENERGY SAVING CONTROLS

Energy Saving Controls

Maximise energy and fuel savings

With the introduction of condensing technology, boilers have continued to increase in efficiency with most current appliances able to reach over 90% efficiency. However, the technology within boilers is now so advanced that, even with future developments, there is little chance of boiler efficiency percentages increasing much further.

The one area that can still help maximise the efficiency and overall performance of the boiler is the correct use of a control. Even with average efficiencies now reaching over 90%, this can be increased by a further 3% - with the simple addition of a weather compensation control for example.

Choosing the right control

There are a number of different controls available so establishing the most suitable one for your heating requirements may be confusing. Vokèra provide a range of controls that can be used with combi and system boilers and include basic mechanical clocks, room thermostats, programmable room thermostats and the Vokèra 'Intelligent Control' range that incorporates the most advanced technology available - such as weather compensation and OpenTherm protocol.

Basic Controls

Mechanical clocks and digital programmers allow basic control over the heating and/or hot water requirements with the ability to set one time period only.



Mynute HE 7 day digital programmer
Code: 514

Suits all main heating and hot water needs when the boiler is connected to a water cylinder. It can be programmed to control the heating and hot water timings at different times each day* for a 7 day period.

Built-in ready made program to suit most customers needs.

7 day battery back up.

Backlit display.

Simple single button to adjust British Summer Time.

Allows for the heating and hot water* to be controlled independently of each other.

*When connected to a water cylinder.



Unica HE 24 hour mechanical clock
Code: 433

Allows control over boiler heating timings with continuous, timed and off modes of operation.

Simple to install with pre-fabricated loom.

Continuous, timed and off mode.

Simple operation.

This clock can also be used with Mynute HE where an existing control for the hot water tank is in operation.



Compact A 24 hour mechanical clock
Code: 20025081

Allows control over boiler heating timings with continuous, timed and off modes of operation.

Simple to install with pre-fabricated loom.

Continuous, timed and off mode.

Simple operation.

Only available as part of pipe cover package.

Room thermostats control the central heating temperature. For maximum comfort it is recommended that your thermostat is set between 18 - 21°C.

RC05 Programmable room thermostat and boiler control

Code: 405



Compatible with discontinued Vokèra products for installation on an existing heating system. The RC05 can be fitted in an accessible location enabling direct control over the boiler.

The RC05 can also be used with the outside weather compensation control* to further increase efficiency and comfort levels. (Code: 2359259)

Facilitates remote reset.

Alarm codes and services icons displayed.

Regulates hot water and heating temperature.

3-modes of operation.

*Compact HE, Linea 7 and Compact SE only

External RF programmable room thermostat

Code: 411



This wireless programmable thermostat can be used with most Vokèra combination boilers and is ideal for retro fitting or to eliminate the need for wires.

Provides simple controllability and enhanced comfort.

50m external range, 30m internal range.

Receiver can be fitted inside boiler.

7 day - 24 hour - 5 and 2 day programmes ensures complete control over temperature and timings.

Contributes to energy savings as more precise instructions are transmitted than a standard clock or programmer.

Combined wireless RF room thermostat with 24 hour clock

Code: 20029494



EASY TO READ LCD DISPLAY	INFO BUTTON	FROST PROTECTION FUNCTION	COMPATIBLE WITH MOST VOKERA MODELS
--------------------------	-------------	---------------------------	------------------------------------

*Contact Vokèra Technical for compatibility with obsolete Vokèra boilers

What does it do?

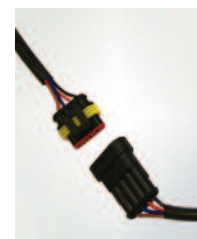
The RF room thermostat allows simple and basic control over the central heating timings and temperatures over a 24 hour period. The control will switch the boiler on and off in order to produce the set temperature at the programmed time

A frost protection function switches on the boiler if the room temperatures drop below 5 degrees. This function is continuously active regardless of any programmed settings and helps prevent damage to the boiler and system during periods of freezing weather conditions.

How does it work?

The combined wireless RF room thermostat is a basic control with many functions. The manually programmed settings on the control will switch on the boiler as well as informing it of the requested room temperature. The programmed 'off' time on the control will instruct the boiler to switch off and to cease supplying central heating.

The receiver is easily connected to the boiler using the 'plug and play' Tyco socket.



'Plug and play' connection for receiver

Intelligent Controls

The installation and correct use of a Vokèra intelligent control can save up to 10% of a home's energy usage whilst providing a more comfortable and stable room temperature. Compatible with Vokèra's high efficiency ranges* these controls aid maximum boiler efficiency.



OpenTherm protocol RF Programmable room thermostat

Wireless version code: 611

Wired version code: 20001776

The Vokèra OpenTherm control uses OpenTherm protocol technology to modulate the Vokèra boiler* outlet temperature in order to maintain a certain room temperature as set by the homeowner maximising boiler efficiency and homeowner comfort.



Saves up to 10% of a home's energy consumption reducing fuel usage as well as reducing CO₂ emissions.

Wireless (RF) transmitter enables simple installation as the transmitter can be wall mounted or free standing.

'Holiday Function' enables the end user to set the control for the duration of the holiday and the temperature at which the boiler should operate during the holiday period, providing suitable heating and hot water temperature upon the homeowners return.

'Optimisation Function' when enabled, will start the boiler prior to the timed 'ON' period so that the room will reach desired comfort level for when the 'ON' period begins.

Simple up and down buttons ensures end-users can easily operate and adjust temporary changes to the set-point.

Two pre defined and one user defined programme allow maximum flexibility over heating and hot water timings.

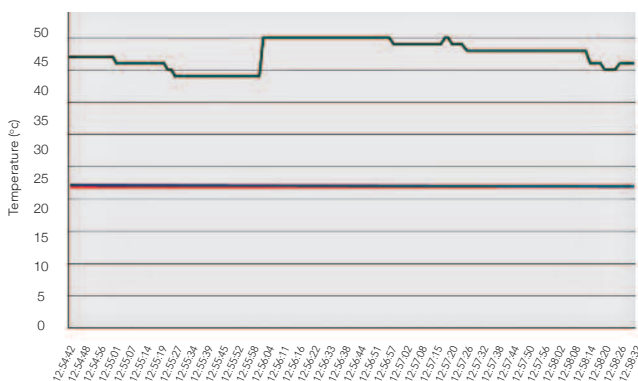
'Info Function' enables end user to view the current room temperature, target room temperature, required hot water temperature, current operating mode and switching times of the current programme.

Automatic mode switching for Summer/Winter (BST) ensures appliance delivers optimum performance and efficiency throughout each season.

Receiver (OT) can be wall mounted or placed in the boiler cover, allowing for a cleanly styled installation.

Wireless (RF) transmitter control panel is located behind a hinged cover to allow the control to blend easily into any setting.

How does the Vokèra OpenTherm protocol work?



The OpenTherm protocol control takes over the control of the boiler's outlet flow temperature to ensure a stable room temperature, i.e. the flow temperature automatically reduces as the room temperature approaches the set-point.

This substantially increases the appliance's efficiency and also avoids temperature 'over-shoot' and 'under-shoot' thereby increasing comfort levels for the end user.

This chart represents a snapshot of how the OpenTherm protocol control manages the appliance set point to aid maximum boiler efficiency and reach an optimum level of comfort for the end user.

— Room temperature
— Flow temperature
— Room set point

Outside weather compensation control

Code: 2359259



EAST TO INSTALL	SUPPLIED AS STANDARD WITH LINEA ONE	CONTROLS CENTRAL HEATING TEMPERATURE	COMPATIBLE WITH MOST HE* MODELS
-----------------	-------------------------------------	--------------------------------------	---------------------------------

What does it do?

The weather compensation control maintains a consistent room temperature by increasing or decreasing the output of the boiler depending on the external temperature.

How does it work?

The outside weather compensation control manages the central heating temperature by regulating the boiler depending on the external weather conditions, providing a consistent and comfortable room temperature.

For example, when the central heating is timed to come on, the external sensor will measure the outside temperature and inform the boiler of how cold it is. Taking into consideration the external temperature the boiler will then work to produce the required output in order to achieve the ideal room temperature.

Compatible with most Vokèra HE models. Can be also connected to Compact HE, Linea 7 and Compact SE using RC05 Programmer.

CONTROLS COMPATIBILITY

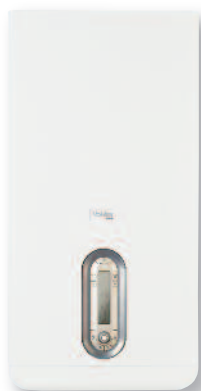
Code	Control	Linea One	Unica HE	Unica BHE	Compact A	Verve 47kW	Mynute HE	Mynute VHE
611	OpenTherm protocol RF programmable room thermostat	✓ ⁽¹⁾	✓	✓	✗	✓ ⁽²⁾	✓ ⁽²⁾	✗
20001776	Wired OpenTherm protocol programmable room thermostat	✓ ⁽¹⁾	✓	✓	✗	✓ ⁽²⁾	✓ ⁽²⁾	✗
2359259	Outside weather compensation control	✓ ⁽³⁾	✓	✓	✗	✓ ⁽²⁾	✗	✗
20029494	Combined wireless RF room thermostat with 24 hour clock	✓	✓	✓	✓	✓ ⁽²⁾	✓ ⁽²⁾	✓ ⁽²⁾
411	External RF programmable room thermostat	✓	✓	✓	✓	✓ ⁽²⁾	✓ ⁽²⁾	✓ ⁽²⁾
405	RC05 Programmable room thermostat and boiler control	Discontinued Vokèra boilers. Contact Vokèra technical for advice.						
20025081	Compact A 24 hour mechanical clock (only available as part of pipe cover package)	✗	✗	✗	✓	✗	✗	✗
433	Unica HE 24 hour mechanical clock	✗	✓	✗	✗	✗	✓ ⁽⁴⁾	✗
514	Mynute HE 7 day digital programmer	✗	✗	✗	✗	✗	✓	✗

⁽¹⁾ Requires wiring kit. Code 1221179

⁽²⁾ Contact Vokèra Technical Helpline for advice. Controls heating only.

⁽³⁾ Outside weather compensation control is supplied in the box with every Linea One

⁽⁴⁾ Can also be used with Mynute HE where an existing control for the hot water tank is in operation



DON'T FORGET...

The Linea One combination boiler comes with the weather compensation control as standard.



Registered address:

Vokera Ltd
Borderlake House
Unit 7 Riverside Industrial Estate
London Colney
Herts AL2 1HG

enquiries@vokera.co.uk

www.vokera.co.uk
www.vokera.ie

Sales, General Enquiries:

T 0844 391 0999
F 0844 391 0998

Vokera Ireland
West Court, Callan
Co Kilkenny
T 056 7755057
F 056 7755060

Vokera Limited reserve the right to change specification without prior notice.
Consumers statutory rights are not affected.

A Riello Group Company.
Company Reg No: 1047779