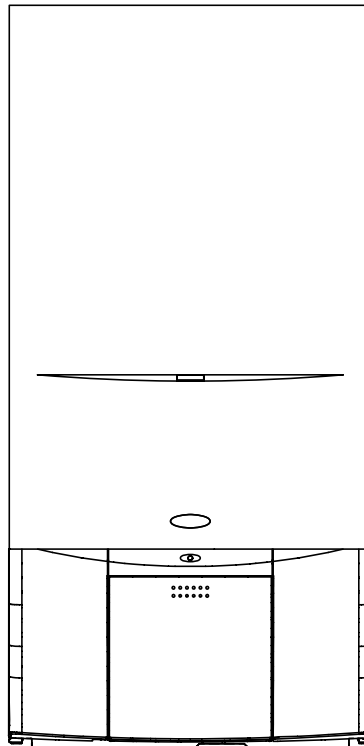
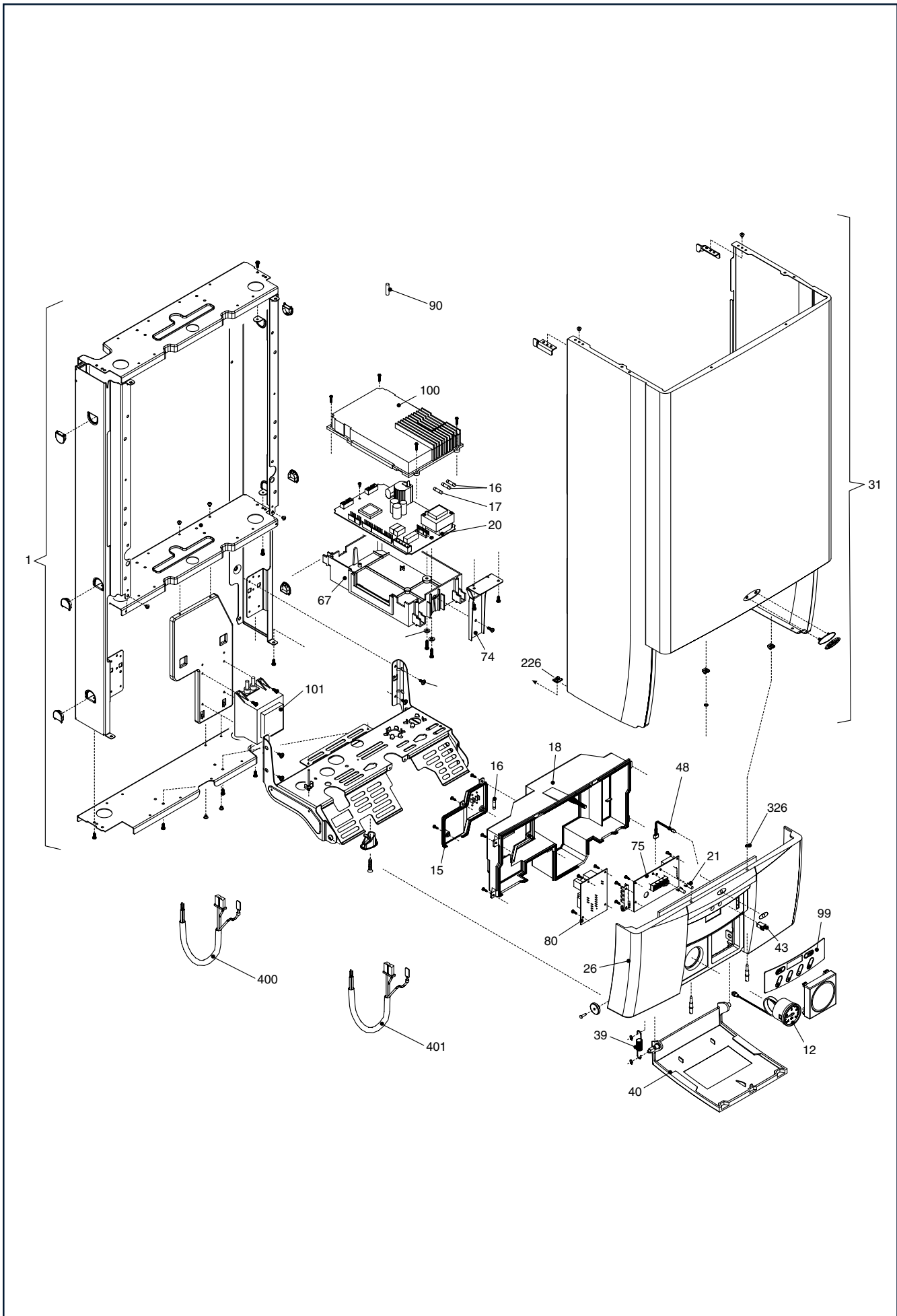


Wall hung boilers

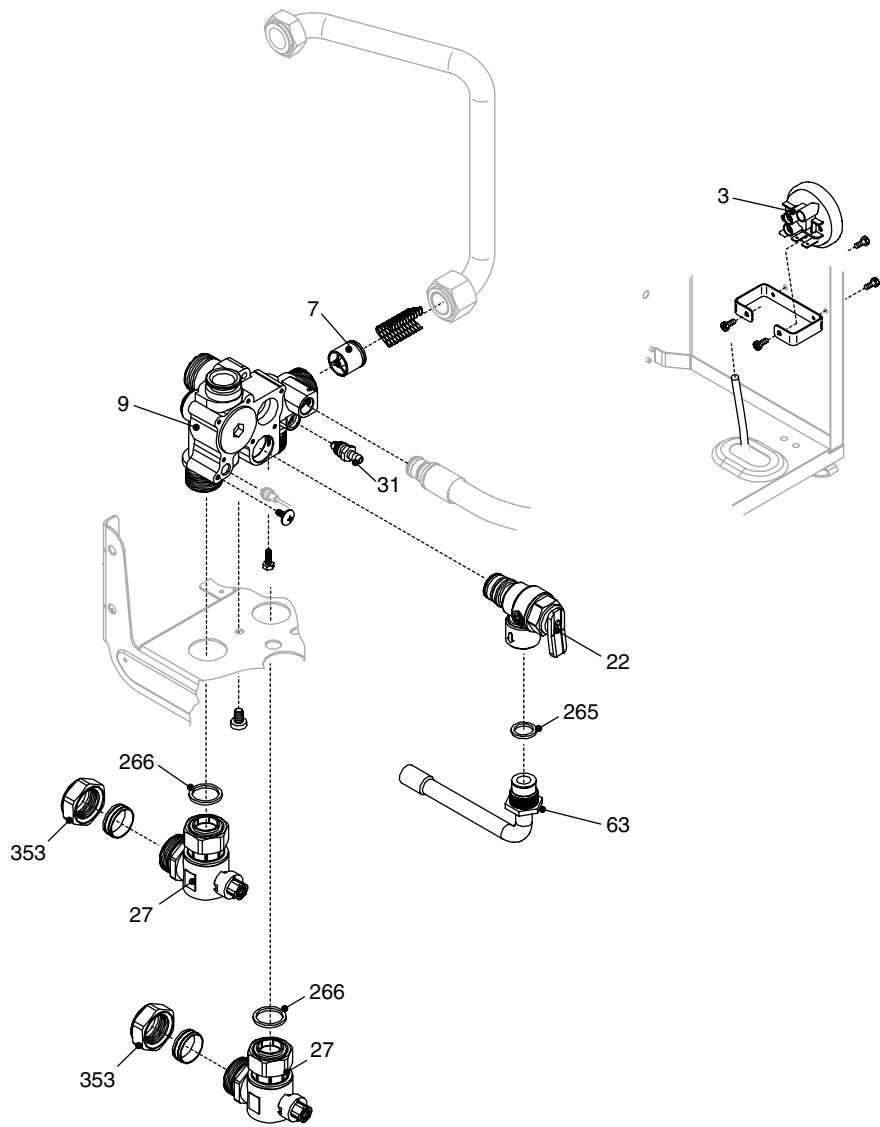
# Pinnacle



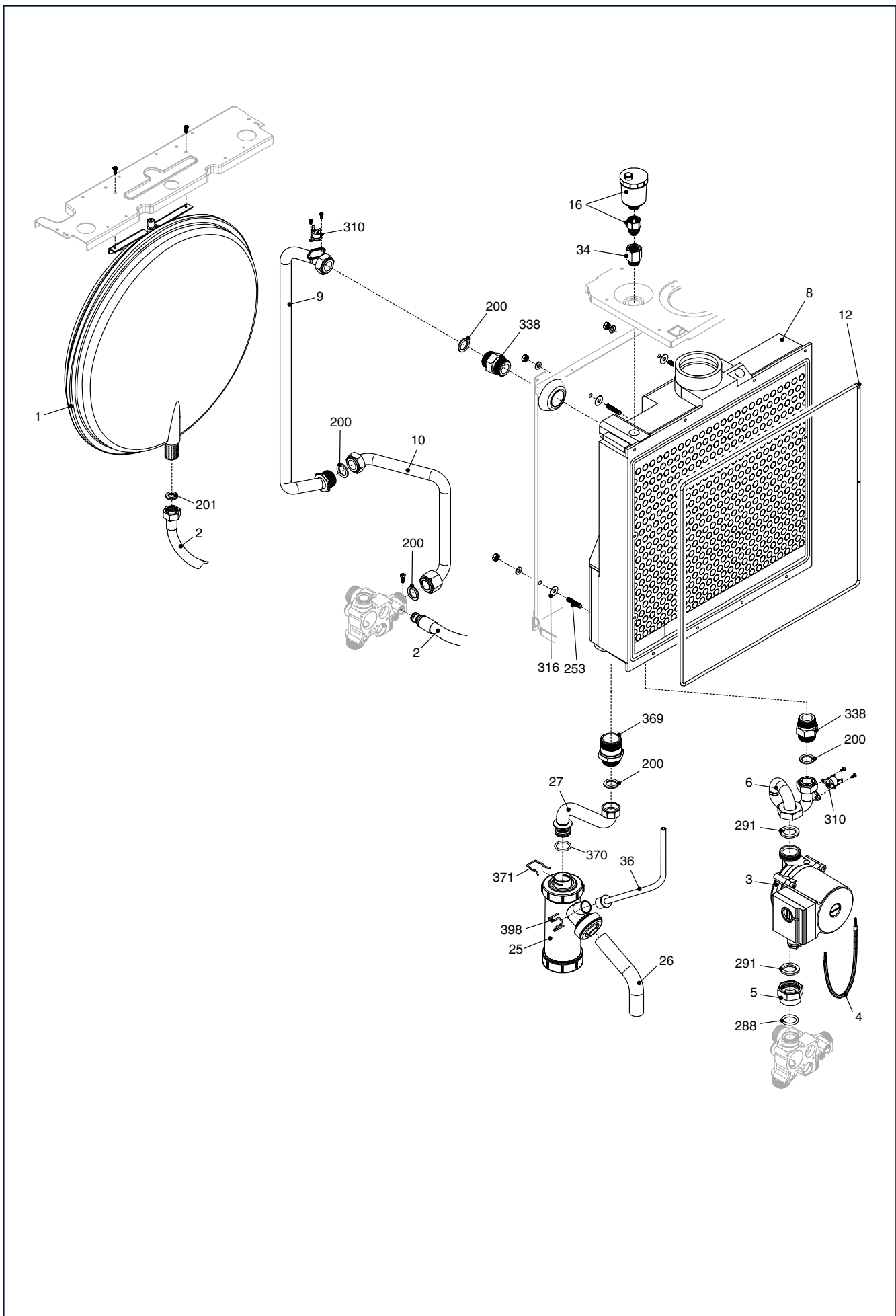
MODEL	PART NUMBER	
	MTN	GPL
PINNACLE 16	2350663	2350665
PINNACLE 26	2350673	2350675



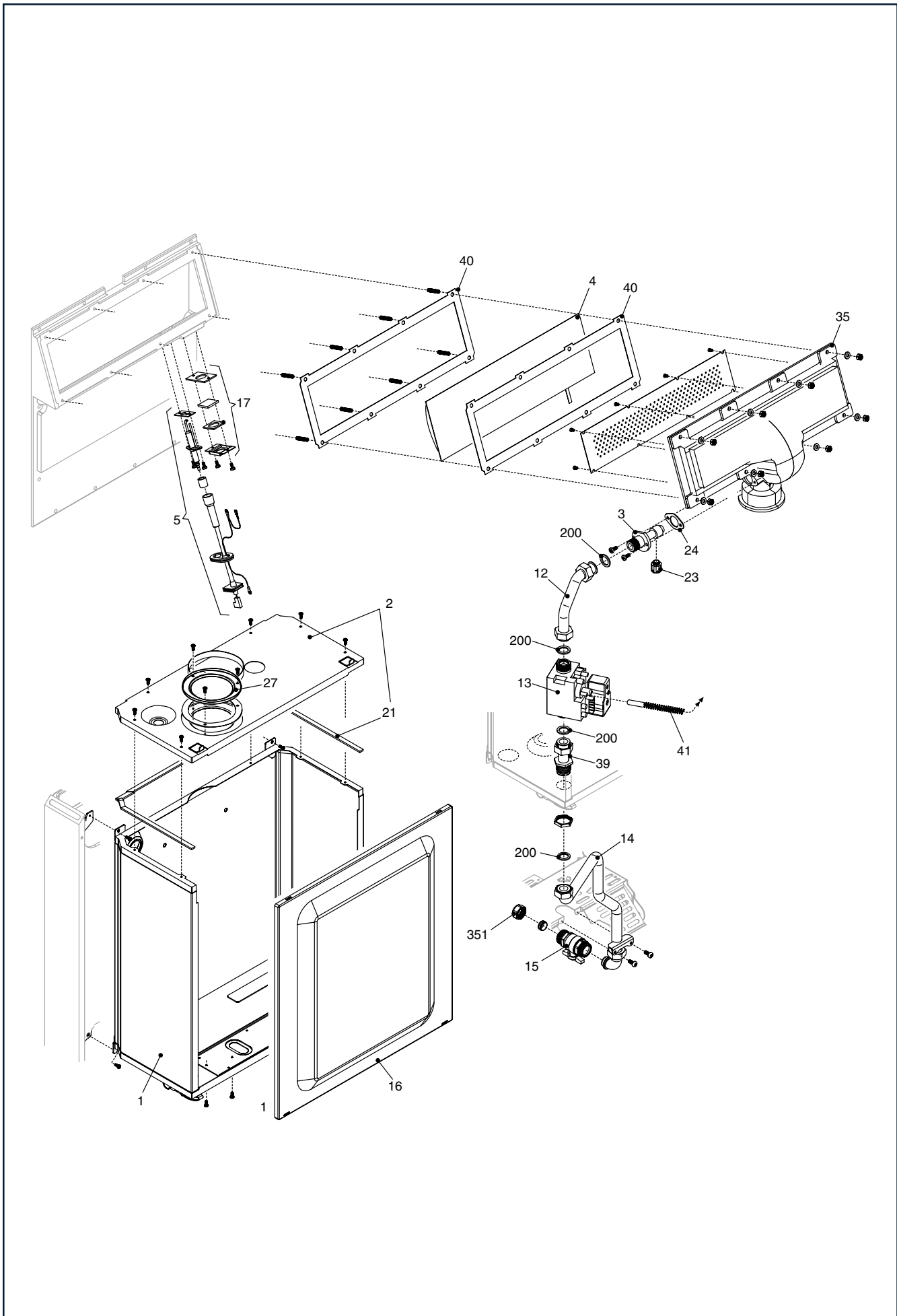
POS.	DESCRIPTION	16	26
1	Frame	R01005243	R01005243
12	Quick primer pressure gauge	R1857	R1857
15	Cover	R10023681	R10023681
16	2 A 5X20 inline fuse	R8968	R8968
17	3,15 A 5X20 inline fuse	R8969	R8969
18	Printed Circuit Board cover	R10021849	R10021849
20	Printed Circuit Board	R10023549	R10023549
21	Led Light Guide	R10023892	R10023892
26	Instrumental panel	R10023346	R10023346
31	Case	R10023589	R10023589
39	Spring	R1862	R1862
40	Door panel	R10023772	R10023772
43	Push-push cover	R1864	R1864
48	Green-red led	R1858	R1858
67	Printed circuit holding	R10023476	R10023476
74	Bracket	R10023571	R10023571
75	Display Printed Circuit Board	R10023297	R10023297
80	Printed Circuit Board	R10023763	R10023763
90	Fuse	R3478	R3478
99	Membrane keypad	R10023891	R10023891
100	Cover	R10023477	R10023477
101	Wired transformer	R10023478	R10023478
226	Edge clip	R5128	R5128
326	O-ring	R1869	R1869
400	Flat cable	R10023586	R10023586
401	Cable	R10024393	R10024393



POS.	DESCRIPTION	16	26
3	Pressure switch	R10022556	R10022556
7	Heating by-pass valve	R1552	R1552
9	Heating distributor manifold	R10021821	R10021821
22	Safety valve	R1806	R1806
27	Heating cock	R1789	R1789
31	Venting plugs kit	R01005137	R01005137
63	Pipe	R10023065	R10023065
265	Washer	R5236	R5236
266	Washer	R5237	R5237
353	Ogive	R1824	R1824

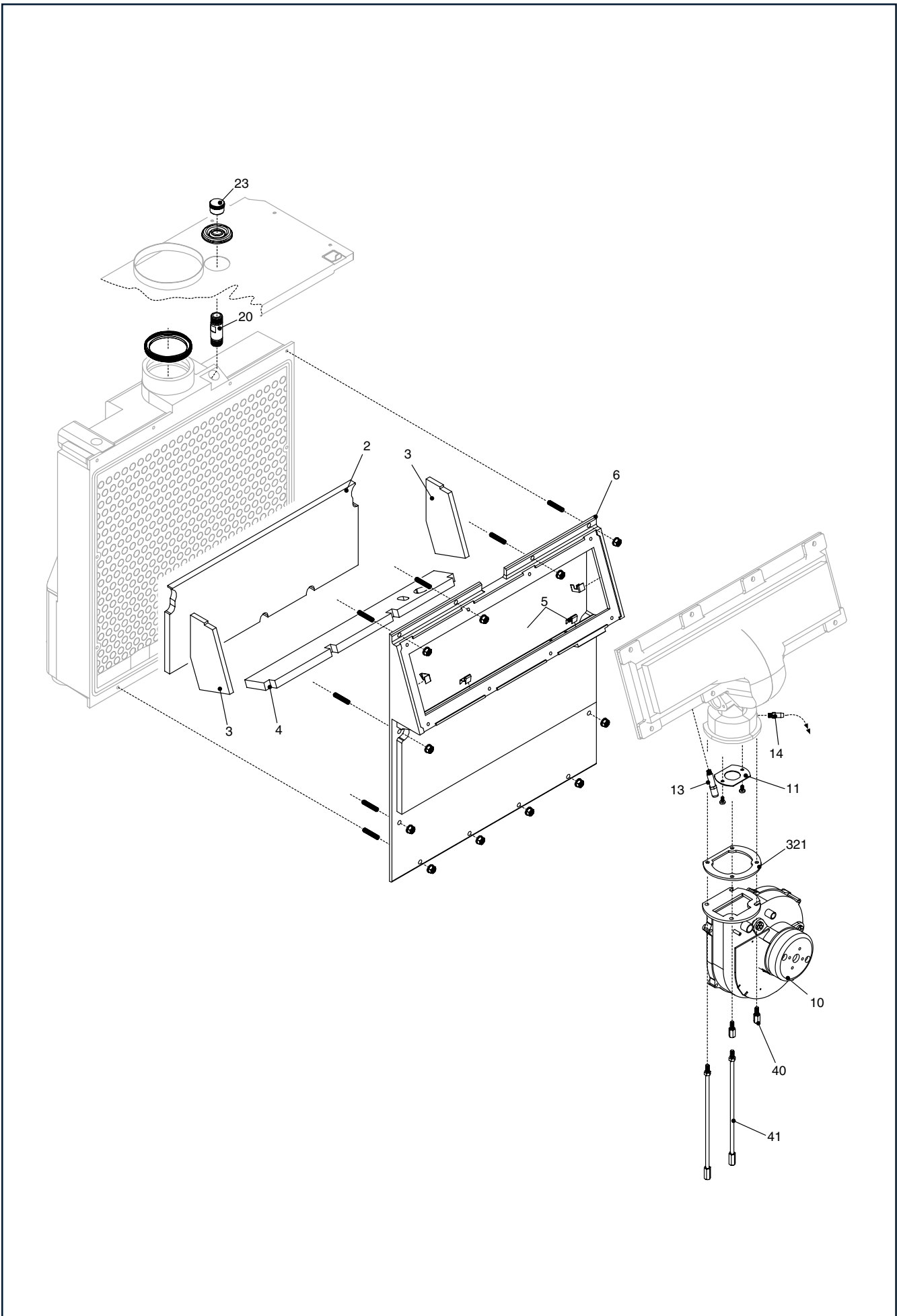


POS.	DESCRIPTION	16	26
1	Expansion vessel	R2573	R2573
2	Flexible pipe	R10023603	R10023603
3	Pump	R8876	R8876
4	Pump cable	R10023573	R10023573
5	Brass nut	R10022444	R10022444
6	Pipe	R10023574	R10023574
8	Heat exchanger	R8884	R8884
9	Pipe	R10023575	R10023575
10	Pipe	R10023697	R10023697
12	Washer	R9287	R9287
16	Air vent bottle+cock assembly	R9806	R9806
25	Siphon	R10024112	R10024112
26	Pipe	R10023530	R10023530
27	Pipe	R10023579	R10023579
34	Connection for air vent bottle	R8911	R8911
36	Connection pipe	R10023580	R10023580
200	Washer	R5023	R5023
201	Washer	R5026	R5026
253	Headless screw	R5216	R5216
288	O ring	R6898	R6898
291	Washer	R6897	R6897
310	NTC sensor	R1194	R1194
316	Washer	R1022	R1022
338	Connection for dom. exp. vessel	R8873	R8873
369	Connection	R10023493	R10023493
370	O-ring	R10023533	R10023533
371	Clip	R10023532	R10023532
398	Clip	R10024336	R10024336





POS.	DESCRIPTION	16	26
1	Roomsealed chamber	R10023486	R10023486
2	Upper panel for air box	R8881	R8881
3	Main burner jet support	R1195	R1195
4	Main burner	R1196	R1196
5	Spark electrode kit	R01005242	R01005242
12	Gas pipe	R10022442	R10022442
13	Gas valve	R10022441	R10022441
14	Pipe	R10023578	R10023578
15	Gas cock connection	R1787	R1787
16	Front panel for air box	R1035	R1035
17	Glass kit	R01005234	R01005234
21	Washer	R5905	R5905
23	Main burner jet NG	R8897	R8970
23	Main burner jet LPG	R10022453	R9295
24	Washer	R9299	R9299
27	Air box hole cap	R8084	R8084
35	Air conveyor	R10022450	R8886
39	Gas pipe	R10022443	R10022443
40	Washer	R9285	R9285
41	Spring	R9296	R9296
200	Washer	R5023	R5023
351	Brass nut	R1823	R1823



POS.	DESCRIPTION	16	26
2	Exchanger lower insulation panel	R1193	R1193
3	Insulation panel	R10027410	R10027410
4	Exchanger upper insulation panel	R1016	R1016
5	Clip	R10021115	R10021115
6	Cover for heat exchanger	R1033	R1033
10	Fan	R10024230	R10024230
11	Gas diaphragm	R10022451	-
13	Pressure connection	R8915	R8915
14	Pressure connection	R8916	R8916
20	Connection	R8908	R8908
22	Washer	R8912	R8912
23	Plug	R8909	R8909
40	Screw	R1006	R1006
41	Screw	R9292	R9292
321	Fan gasket	R8893	R8893

<b>REV.</b>	<b>DATA</b>	<b>DESCRIZIONE</b>
1.0	06/09/02	MODIFICHE VARIE COM. 189 + 201 + 206/02 E17
2.0	04/07/03	MODIFICHE VARIE
3.0	24/02/06	MODIFICHE VARIE



---

Vokera reserve the right to change the specifications without prior notice.  
Consumers' statutory rights are not affected.