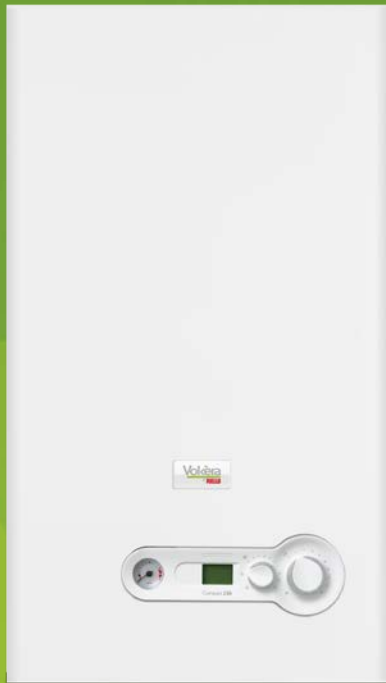


Compact A

High efficiency
combi boiler



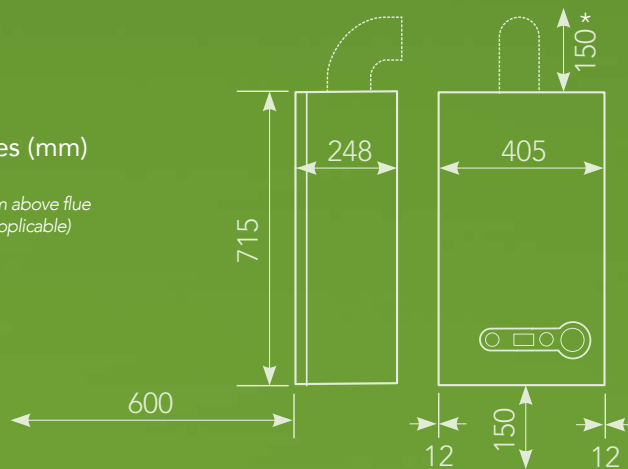
- RANGE 25A - 29A ■
- ErP CLASS A ■
- 2 YEAR WARRANTY ■
- LIGHTWEIGHT WITH COMPACT DIMENSIONS ■
- KITCHEN CUPBOARD FIT ■

Compact A

High efficiency combi boiler

Dimensions and Clearances (mm)

*From casing or 25mm above flue elbow (whichever is applicable)



- Fully compliant with the Energy-related Products Directive. Further efficiency can be achieved when installed with a weather compensation sensor or OpenTherm control such as BeSMART.
- Small dimensions enable the boiler to be sited almost anywhere in the home, including within a kitchen cupboard.
- Rear flue option as well as the standard top flue option provides a versatile installation. Other flueing options available are; horizontal, vertical and twin flue.
- Easy to understand diagnostic display aids the service engineer in the unlikely event of a fault developing.
- 2 year parts and labour warranty.⁽¹⁾
- Energy Saving Trust endorsed product.
- Compact dimensions and low lift weight at only 26kg for the 25A enables a flexible installation allowing the boiler to be lifted into place easily, even in tight spaces.
- Attach the 7 day RF programmable room thermostat, with a Tyco connection for a simple installation, to increase efficiency and maintain optimum room temperature.
- Designed for easy installation. Standard Vokèra pipework layout enables trouble-free replacement of older Vokèra models.
- Simple commissioning; only minimal adjustments are required after installation and automatic modulation eliminates the need to range rate the boiler.
- Anti-cycling control prevents wasteful on/off cycling and reduces wear and tear.
- Low NOx - Class 5 performance.
- Built-in frost protection, protects the appliance from damage during periods of cold weather.
- Vokèra's unique radial design heat exchanger utilises an extruded aluminium alloy. The design and large cross-sectional area eliminate the risk of scaling or superheated areas.
- Installation time saving features: Built-in condensate trap with safety device and push-fit connection.
- Combustion analysis test point for easy servicing and maintenance.
- Compatible with Vokèra Fuelsaver passive flue gas heat recovery device which is listed on the PCDB and validated for SAP 2009.
- Standard Autostop disabling function⁽³⁾ that automatically changes the current operating mode and moves it permanently into the standby mode, helping Registered Social Landlords fulfill their legal obligation of an annual gas safety check.

⁽¹⁾Subject to registration and annual service. ⁽²⁾Control Interface required for use with OpenTherm and Weather compensation sensor. Code 20008401. ⁽³⁾Autostop activation device required.



ErP Compliant



2 Year Warranty⁽¹⁾



Lightweight and Compact



Cupboard Fit



BeSMART Compatible



Endorsed Product

GET IN TOUCH

Vokèra Limited, Borderlake House, Unit 7 Riverside Industrial Estate, London Colney, AL2 1HG

E: enquiries@vokera.co.uk

T: 0844 391 0999

W: www.vokera.co.uk

F: 0844 391 0998

SPECIFICATIONS	COMPACT 25A	COMPACT 29A
PRODUCT ORDER CODE	20099226	20099227
CENTRAL HEATING		
HEAT INPUT (kW)	20	25
MAXIMUM HEAT OUTPUT 60/80°C (kW)	19.5	24.5
MAXIMUM HEAT OUTPUT 30/50°C (kW)	20.8	26.2
DOMESTIC HOT WATER		
MAXIMUM INPUT (kW)	25	29
FLOW RATE - 35°C RISE (L/MIN)	10.2	11.9
DIMENSIONS		
HEIGHT (MM)	715	
WIDTH (MM)	405	
DEPTH (MM)	248	
WEIGHT		
DRY WEIGHT (KG)	26	27
CONNECTIONS		
FLOW & RETURN	22MM	
GAS	15MM	
DHW INLET & OUTLET	15MM	
SAFETY VALVE	15MM	
CONDENSATE	21MM	
ELECTRICAL		
VOLTAGE (V/Hz)	230/50	
FLUE DETAILS (CONCENTRIC)		
MAXIMUM HORIZONTAL FLUE LENGTH 60/100MM	5.85M	4.85M
MAXIMUM VERTICAL FLUE LENGTH 60/100MM	6.85M	5.85M
MAXIMUM HORIZONTAL FLUE LENGTH 80/125MM	15.3M	12.8M
MAXIMUM VERTICAL FLUE LENGTH 80/125MM	16.3M	13.8M
FLUE DETAILS (TWIN)		
MAXIMUM HORIZONTAL FLUE LENGTH (80MM/80MM)	45M/45M	40M/40M
MAXIMUM VERTICAL FLUE LENGTH (80MM/80MM)		
EFFICIENCY		
ErP SEASONAL SPACE HEATING ENERGY EFFICIENCY (CLASS/%)	A/93	A/93
ErP WATER HEATING EFFICIENCY (XL PROFILE) (CLASS/%)	A/85	A/84
SAP 2009 EFFICIENCY (%)	89.1	89.0
NOX CLASS	5	5

ACCESSORIES	
DESCRIPTION	CODE
REAR FLUE TERMINAL	29450133
TELESCOPIC FLUE TERMINAL	29450121
STANDARD BeSMART WI-FI KIT	20111860
711 OPENTHERM RF PROGRAMMABLE ROOM STAT ⁽²⁾	20050690
7 DAY RF PROGRAMMABLE ROOM THERMOSTAT	20101743
OUTSIDE WEATHER COMPENSATION SENSOR ⁽²⁾	2359259
COMPACT A 24 HOUR ANALOGUE CLOCK KIT	20025085
SPACING FRAME	20030704
MAGNETIC FILTER	29450199
FUELSAVER	29450000
CONDENSE PUMP	404
PIPE COVER	20012594
COMPACT 25A / 29A LPG CONVERSION KIT	20045569 / 20029055

WE ARE SOCIAL

