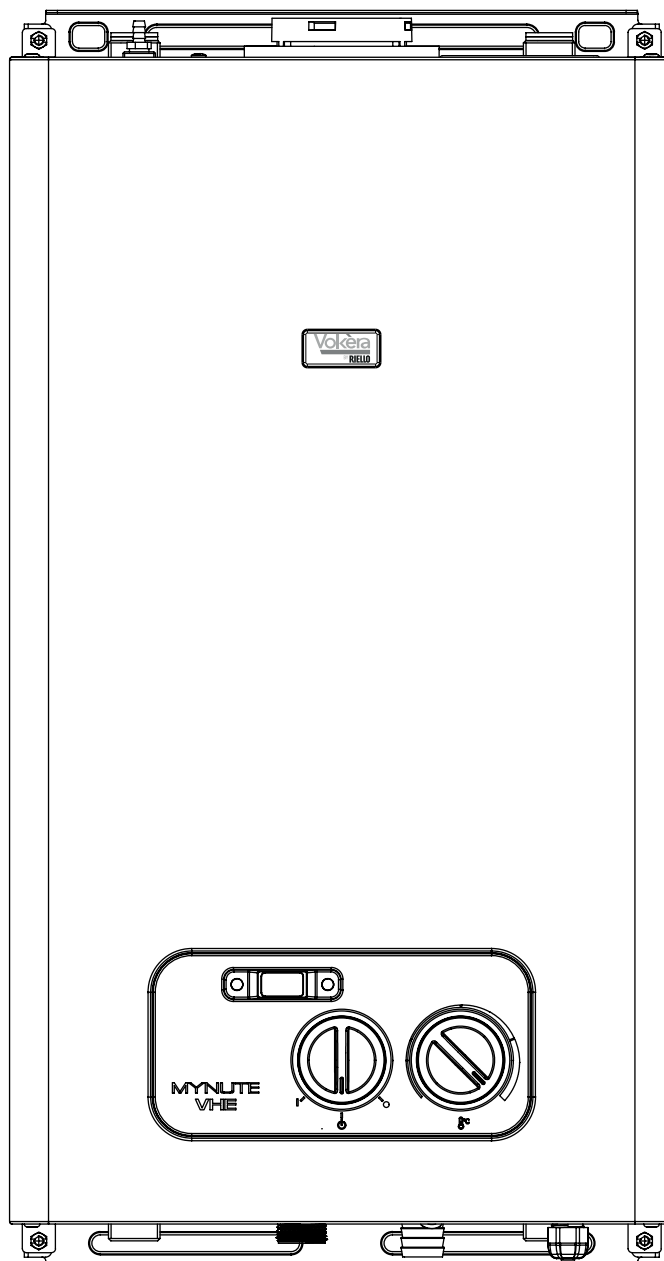
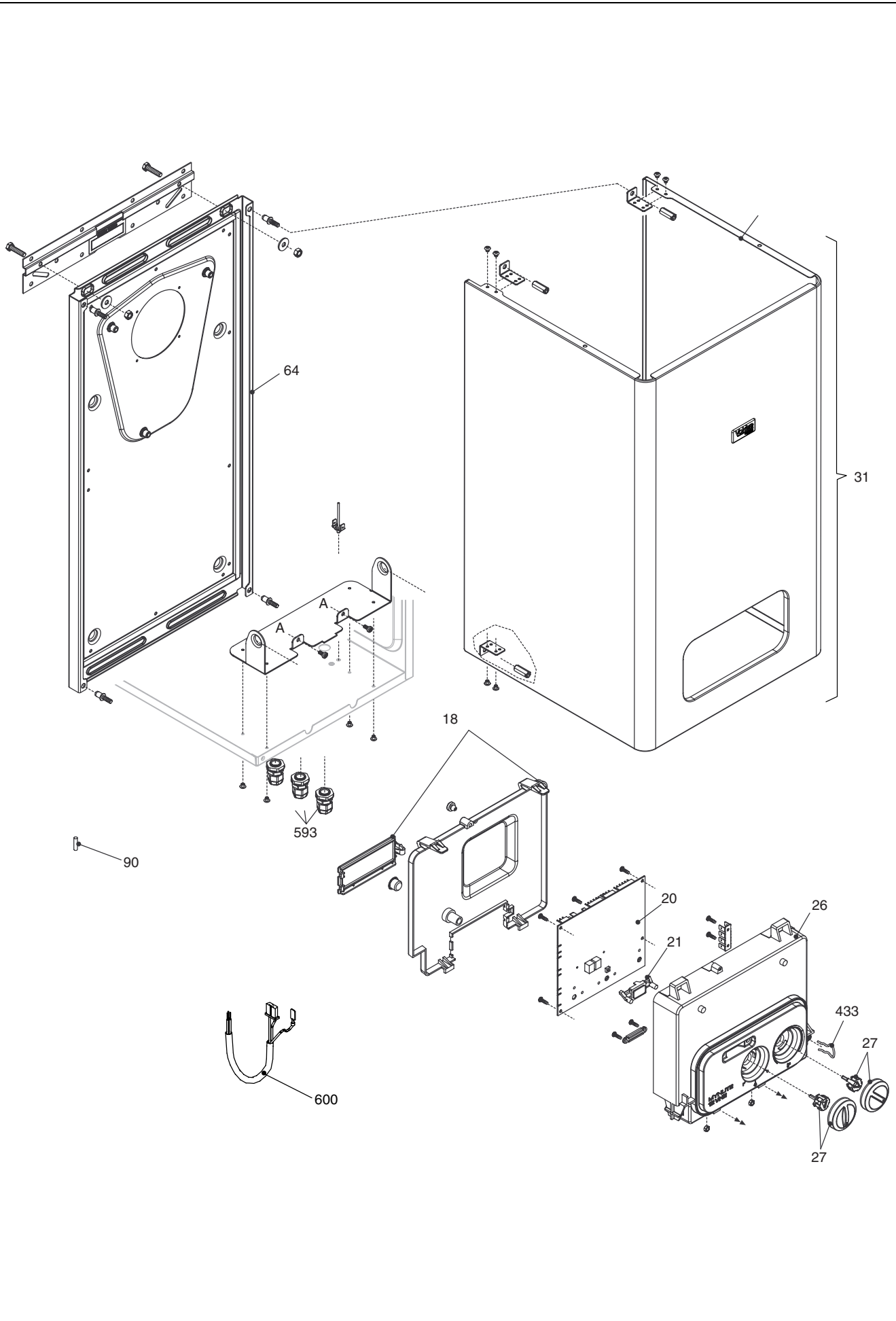


Wall hung boilers

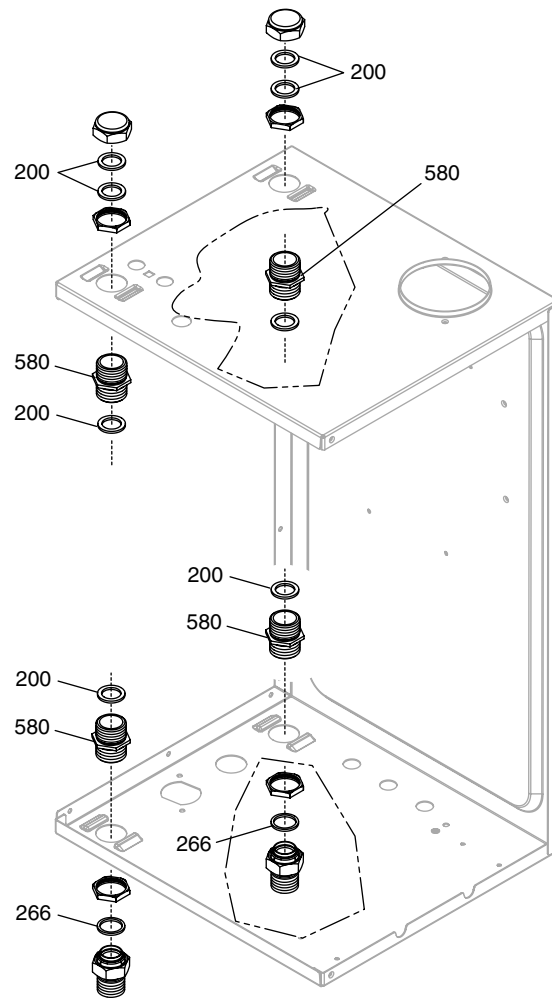
Mynute 15 VHE



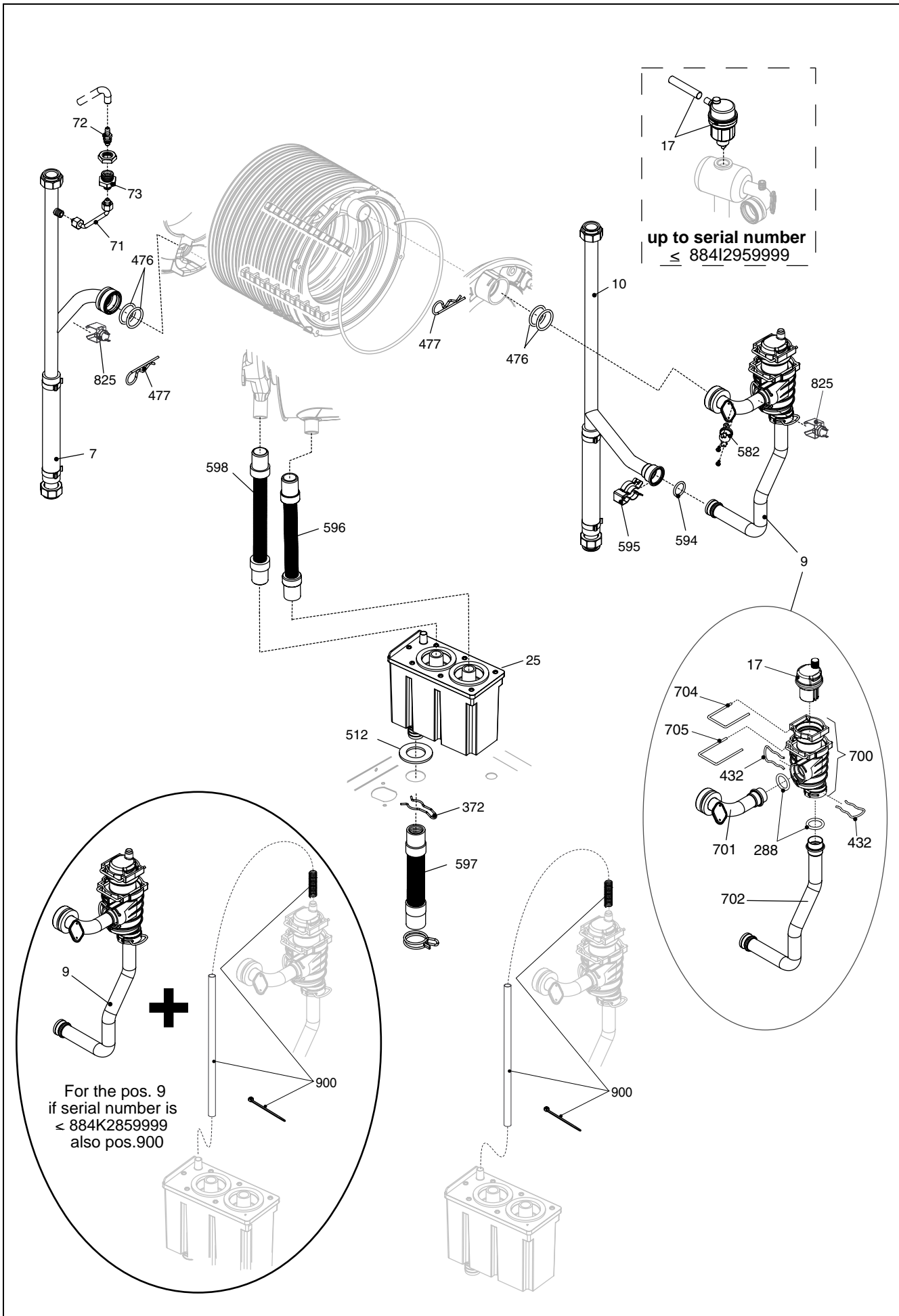
MODEL	PART NUMBER	
	MTN	GPL
Mynute 15 VHE	2351173 (884)	2351175 (885)



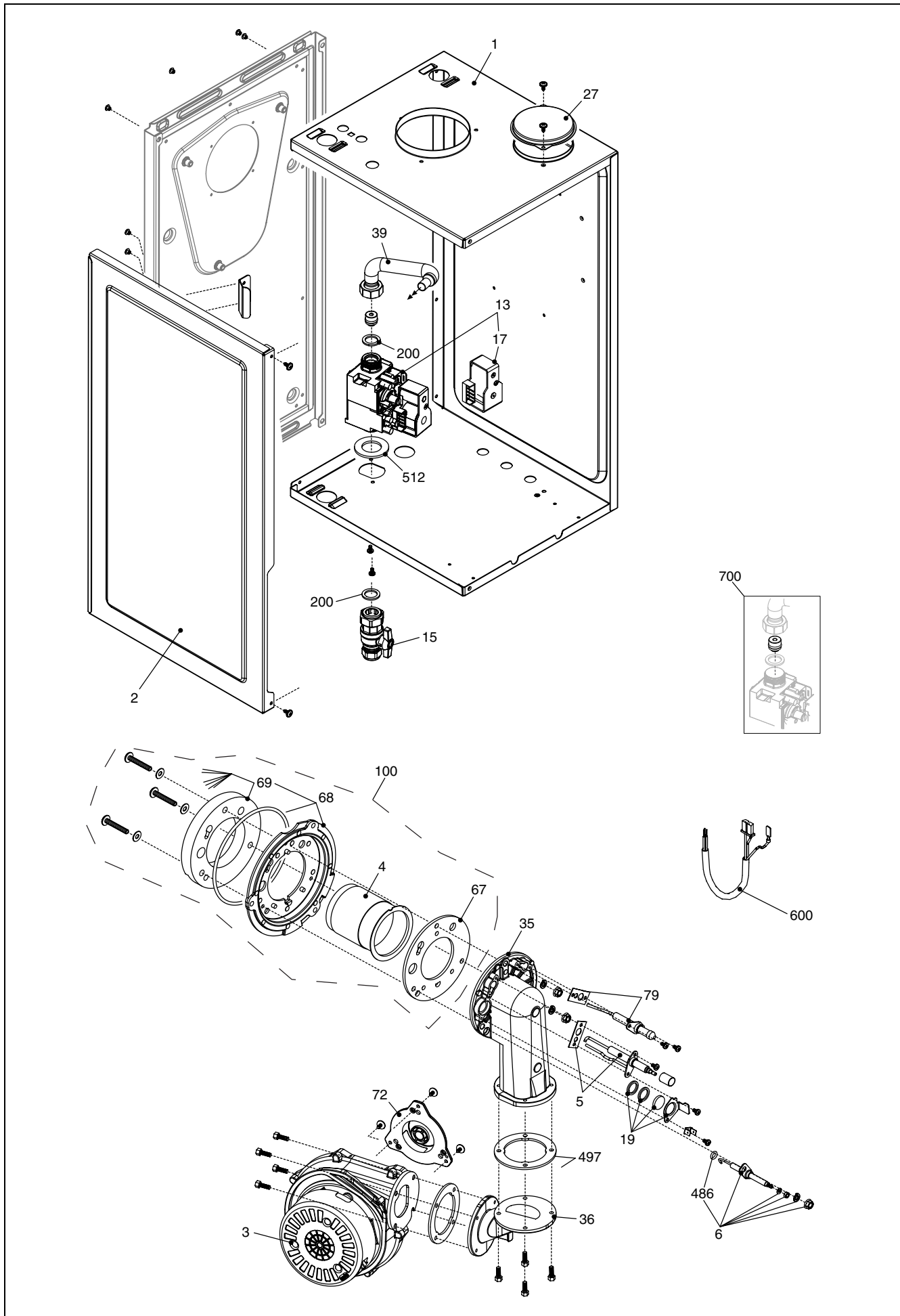
POS.	DESCRIPTION	15
18	Posterior cover instrumental panel	20000121
20	Printed circuit board	R10029717
21	Led light guide	R10028557
26	Instrumental panel	20000168
27	Knob assembly	R10028559
31	Case	20000122
64	Frame	20000139
90	Fuse	R3478
433	Clip	R10024986
593	Discharge cap	20000143
600	Pump cable	20000134
600	Power wiring harness	20000136



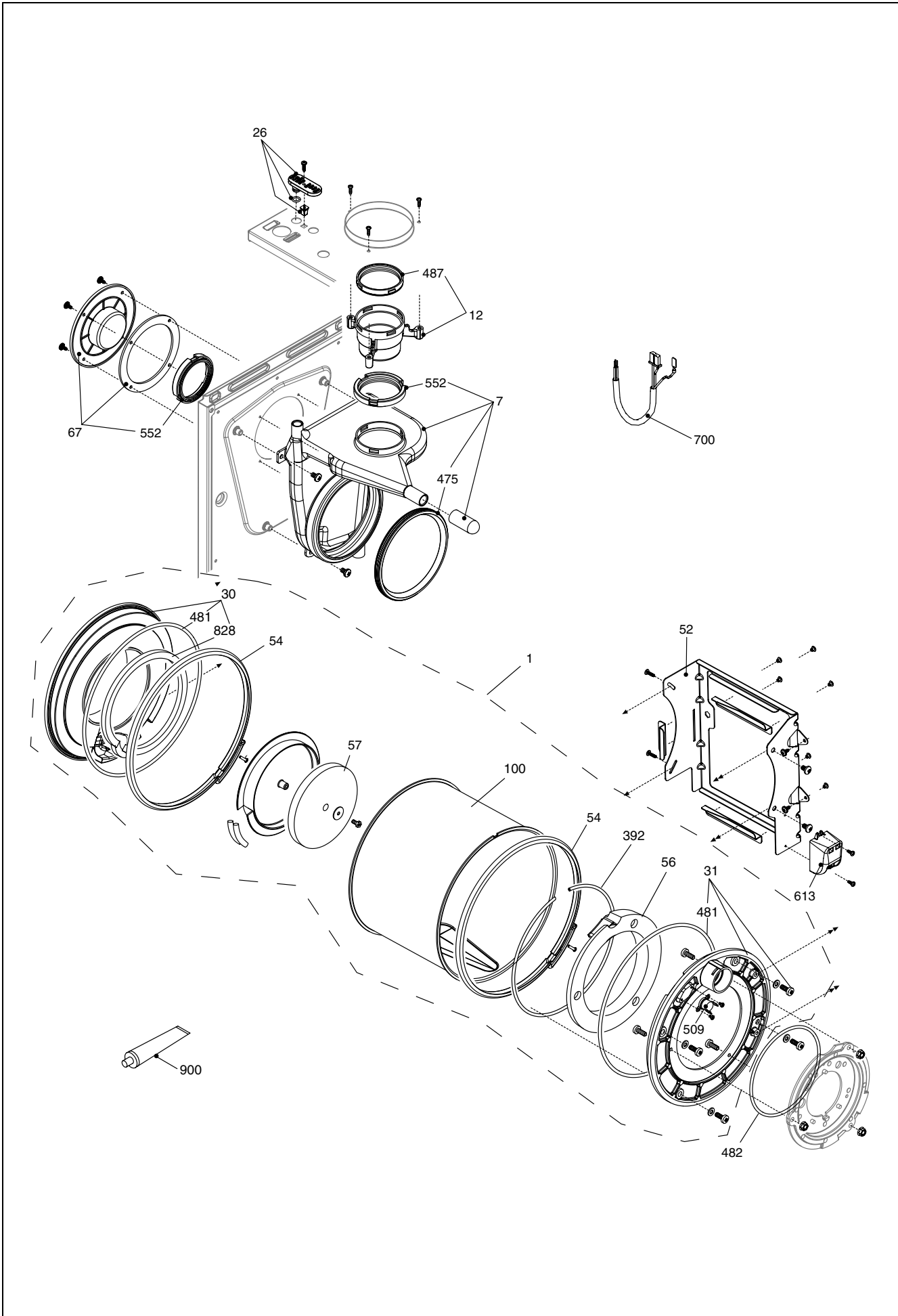
POS.	DESCRIPTION	15
200	Washer	R5023
266	Washer	R5237
580	Connection M 3/4 - 3/4	R10029526



POS.	DESCRIPTION	15
7	Pipe	20000128
9	Kit degasser + tube (also code 20096793 if serial n. ≤ 884K2859999)	20020255
10	Pipe	20000127
17	Air vent (up to serial n. ≤ 884I2959999)	R10029306
17	Air vent valve (from serial n. ≥ 884I3050001)	20019768
25	Condensate reservoir	R10028405
71	Pipe	20000129
72	Drain tap	R01005137
73	Cock	R10028431
288	O ring	R6898
372	Clip	R2588
432	Clip	R10024958
476	O ring	R10026324
477	Split pin	R10026269
512	Washer	R10027193
582	Thermostat	R9695
594	Washer	20024869
595	Clip	20024086
596	Flexible pipe	20000132
597	Flexible pipe	20000133
598	Pipe	R10026545
700	Degasser kit	20032553
701	Pipe	20020252
702	Pipe	20020254
704	Clip	20019767
705	Clip	20120828
825	NTC Detector	20078350
900	Degasser connection assembly	20096202



POS.	DESCRIPTION	15
1	Roomsealed chamber	20000119
2	Roomsealed chamber side	20000140
3	Fan	R10028456
4	Burner	20090378
5	Igniter	R10027864
6	Condense electrode	R10026316
13	Gas valve	20039202
15	3/4" gas cock	R10027806
17	Gas valve solenoid	20040675
19	Glass flange assembly	R10029823
27	Hole cover	20005586
35	Air/gas manifold	R10028420
36	Flange fan	20000120
39	Gas pipe	20000125
67	Washer	R10026322
68	Flange + insulation panel	20046835
69	Insulation panel	20046836
72	White mixer	20019125
79	Flame sensor	R10028422
100	Burner assembly	20000148
200	Washer	R5023
486	O ring	R10026325
497	Washer	R10026796
512	Washer	R10027193
600	Spark electrode cable	R10026558
600	Gas valve cable	20000137
600	Ignition cable	20003219
700	Ng conversion kit	R01005464
700	LPG conversion kit	R01005446



POS.	DESCRIPTION	15
1	Condensing exchanger assembly	20000141
7	Conveyor	20040099
12	Flue drain connection	R10028421
26	Cap smoke analysis	20089999
30	Flange assembly	20101331
31	Burner flange	20047807
52	Bracket	20051418
54	Ring closing	20047811
56	Insulation panel	20047812
57	Tryton retarder	20036537
67	Drain plug	20000118
100	Container exchanger	20048263
392	Washer	20047819
475	Outlet heat exch.seal gasket	R10026323
481	Washer	20047802
482	Inlet heat exch.seal gasket	R10026366
487	Washer Ø 60	R10026345
488	O ring	R10026494
509	High limit thermostat	R10026982
552	Washer Ø 60	R10028426
613	Kit transformer + cable	20002969
700	Combustion cable	20000135
700	Wiring harness	R10027360
828	Washer	20095796
900	Tube sealant	20047820

Rev.	data	Descrizione
1.0	16/04/08	E00120070214 : guarnizioni, disegno rampe E00120080089 : cablaggio, trasformatore
2.0	07/08/08	E00120080266 : sonda e molletta
3.0	09/10/09	E001220080500: bruciatore – E00120090492: nuovo brand Vokera E00120090526: mixer
4.0	04/01/2010	E00120090590 : rampa degasatore – E00120090613 : tappo scatola aria
5.0	06/04/2011	E00120100115 : molletta e OR rampa degasatore Inserito Tryton scambiatore condensante E00120110166 : eliminata protezione curva scambiatore
6.0	28/07/2011	E00120110317 . nuova bobina valvola gas – E00120110306 : valvola gas
7.0	20/12/2011	E00120110744 : Flangia e isolante bruciatore
8.0	23/04/2012	E00120110298 : convogliatore – gestione supporto scambiatore
9.0	24/09/2013	E00120130612 : sonda a contatto – gestione componenti scambiatore
10.0	08/07/2015	Tolta caldaia dalla pubblicazione E296 – Inserite matricole Rif. E0012009590 E00120140520: tappo degasatore 2 fori con gestione matricola E00120140908 : guarnizione scambiatore condens. – Gestione bruciatore singolo E00120150182 : flangia (scambiatori MK1)
11.0	15/07/2016	E00120120403: tappo scarico fumi – Aggiunta molletta fissaggio degasatore E00120150681 : tubetto collegamento degasatore sifone
12.0	22/02/2017	E00120170040 : Nuovo Brand Vokera by Riello



Vokera reserve the right to change the specifications without prior notice.
Consumers' statutory rights are not affected.